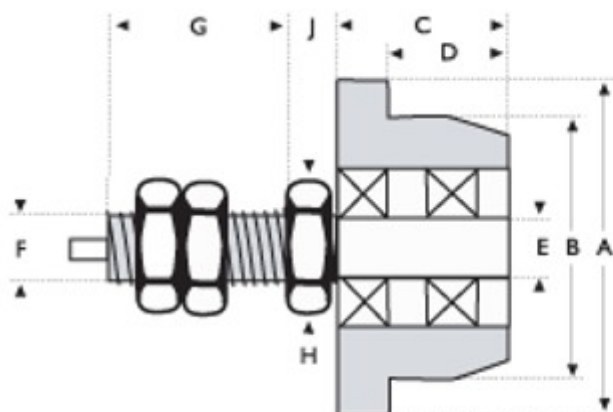


## WA Series

A range of single flanged, radiused tread steel wheels fitted into a steel stub axle. These fit within standard sections of channel and 'I' beams. The radiused tread accommodates the angle of the section and improves wear and tracking characteristics. Operating temperatures of -30C to +120C. Wheels are manufactured from steel to BS970 Part 1: 1983:080M40, Axles to BS970 Part 1: 1983:606M36. Load ratings from 160kg to 1500kg. When shock loadings are to be withstood by this range the 'maximum load rating' should be reduced by a shock loading factor of 0.7.



Axial Load (kg)	Dimensions (mm)									Catalogue Reference
	A	B	C	D	E	F	G	H	J	
160	70	55	35	25	12	M16	40	22	10	55WA
370	100	85	35	25	20	M24	52	30	15	85WA
700	125	105	35	25	25	M24	62	32	15	105WA
1000	160	133	47	35	25	M30	63	36	18	133WA
1500	200	175	50	35	30	M36	73	46	20	175WA

## SSF Series

Single flange wheels manufactured from steel with a tensile strength of approx. 660 N/mm<sup>2</sup>. Designed to be used in pairs on common axles to run on parallel rails. Performance will depend upon the correct selection of rail width and running clearances. Flanges should be inside the rails and a 6mm (0.25") clearance should be allowed between each flange and the mating rail. Load ratings of 970kg to 33600kg based on full tread width being used. Alternative bore / bearing diameters, alternative bearing types and technical information on rolling resistance coefficients and dimensions available on request. Please call Sales for details.



Tread Dia. (mm)	Tread Width (mm)	Flange Dia. (mm)	Overall Width (mm)	Axle Dia. (mm)	Catalogue Reference					
					Max Load (kg)	Ball Journal Bearing	Max Load (kg)	Taper Roller Bearing	Max Load (kg)	Keywayed
100	25	125	37	20	970	SSF100/25/BJM20	-	n/a	1400	SSF100/25/KM20
150	40	190	55	25	1140	SSF150/40/BJM25	-	n/a	3300	SSF150/40/KM25
200	55	240	70	30	2040	SSF200/55/BJM30	5200	SSF200/55/TBM30	6100	SSF200/55/KM30
300	60	345	80	40	3348	SSF300/60/BJM40	-	n/a	10000	SSF300/60/KM40
350	60	395	80	50	7340	SSF350/60/BJM50	10600	SSF350/60/TBM50	11700	SSF350/60/KM50
400	70	450	100	60	-	n/a	13350	SSF400/70/TBM60	15600	SSF400/70/KM60
450	95	495	125	75	-	n/a	20400	SSF450/95/TBM75	24000	SSF450/95/KM75
600	100	660	130	100	-	n/a	30580	SSF600/100/TBM100	33600	SSF600/100/KM100

## WED, WCI, WHC and WGR Series

Ranges of medium duty polypropylene and heavy duty cast iron wheels suitable for more demanding industrial requirements.



**WED Series  
Medium Duty**

Grey Polypropylene wheel.

Wheel Dia. (mm)	Tread Width (mm)	Bore Size (mm)	Hub Length (mm)	Load Cap. (kg)	Bearing Type	Catalogue Reference	USED IN CASTOR SERIES
41	19	6.4	21	20	Plain	WED158	-
50	19	6.4	21	27	Plain	WED234	-
63	19	6.4	24	34	Plain	WED2534	-
75	25	8.4	27	60	Plain	WED325	-
100	25	8.4	27	75	Plain	WED425	-
100	35	12	40	125	Plain	WED41M12	-
100	35	12	40	125	Roller	WED41RBW12	-
125	35	12	40	125	Plain	WED51M12	-
125	35	12	40	125	Roller	WED51RBW12	-

**WCI Series  
Heavy Duty**

Black Cast Iron wheel.



Wheel Dia. (mm)	Tread Width (mm)	Bore Size (mm)	Hub Length (mm)	Load Cap. (kg)	Bearing Type	Catalogue Reference	USED IN CASTOR SERIES
50	22	6.4	27	61	Plain	WCI20	-
63	25	9.5	33	122	Plain	WCI25	61
75	32	12	40	170	Plain	WCI3M12	61
100	38	15	48	450	Plain	WCI4M15	SL, 61, 22
100	38	15	48	450	Roller	WCI4RBW15	SL, 61, 22
125	41	15	48	630	Plain	WCI5M15	SL, 61, 22
125	41	15	48	630	Roller	WCI5RBW15	SL, 61, 22
150	45	20	60	1180	Plain	WCI6M20	KV, GT, SL, 55, 61
150	45	20	60	1180	Roller	WCI6RBW20	KV, GT, SL, 55, 61
150	45	25.4	60	1180	Plain	WCI6L	-
200	45	20	60	1270	Plain	WCI8M20	KV, GT, SL, 55, 61
200	45	20	60	1270	Roller	WCI8RBW20	KV, GT, SL, 55, 61
200	45	25	60	1270	Roller	WCI8RBW25	-
200	45	25.4	60	1270	Plain	WCI8L	-
200	45	25.4	60	1270	Roller	WCI8LRB	-
250	51	25	60	1360	Roller	10RBW25	KV, GT
250	51	25.4	60	1360	Roller	WCI10RB	-



**WHC Series  
Extra Heavy Duty**

Black cast iron wheel.

Wheel Dia. (mm)	Tread Width (mm)	Bore Size (mm)	Hub Length (mm)	Load Cap. (kg)	Bearing Type	Catalogue Reference	USED IN CASTOR SERIES
150	70	31.8	92	3270	Taper Roller	WHC306TW	EH
250	76	31.8	92	3270	Taper Roller	WHC310TW	EH
250	102	34.9	148	7025	Taper Roller	WHC510TW	EH

**WGR Series  
Heavy Duty**

Black V grooved cast iron wheel.  
Groove width 25mm x 90°.



Wheel Dia. (mm)	Tread Width (mm)	Bore Size (mm)	Hub Length (mm)	Load Cap. (kg)	Bearing Type	Catalogue Reference	USED IN CASTOR SERIES
150	48	20	60	1020	Roller	WGR6RBW20	On Application

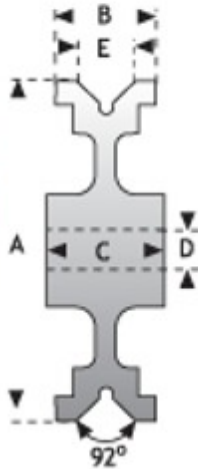
## CV & CF Series Wheels

A range of special application cast iron wheels for use on rails or on inverted angle iron track. Manufactured from close grained castings of grey iron material, sometimes described as 'semi-steel' to BSEN1561. These wheels combine strength and shock resistance with long life and economy. Able to withstand extremes of temperature. Load capacities to 1150Kg.

### CV Series Heavy Duty

V grooved cast iron wheel.

Groove angle 92°. Clear resin shellac painted.



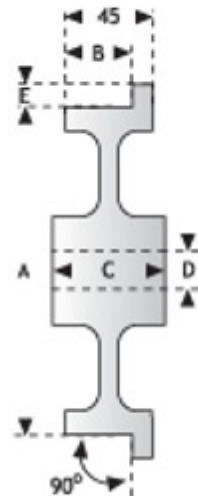
Wheel Dia. (mm) A	Tread Width (mm) B	Flange Groove (mm) E	Bearing Bore Size (mm) D	Hub Length (mm) C	Load Cap. (kg)	Bearing Type	Catalogue Reference
75	35	21	19	45	205	Roller	075CVRA
75	37	25	20	60	225	Roller	075CV1B
100	46	25	20	60	300	Roller	100CV1H
100	46	25	20	57	300	Ball Journal	100CV2H
125	38	20	20	60	300	Roller	125CV1H
125	38	20	20	57	300	Ball Journal	125CV2H
150	45	32	25	60	1000	Roller	150CV1H
150	45	32	20	57	1000	Ball Journal	150CV2H
200	45	32	25	60	1000	Roller	200CV1H
200	45	32	20	57	1000	Ball Journal	200CV2H



### Parallel Tread

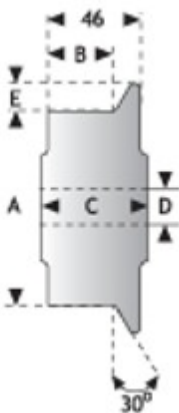
### CV Series Heavy Duty Parallel Tread

Single Flange cast iron wheel. 90° angle flange. Clear resin shellac painted.



Wheel Dia. (mm) A	Tread Width (mm) B	Flange Groove (mm) E	Bearing Bore Size (mm) D	Hub Length (mm) C	Load Cap. (kg)	Bearing Type	Catalogue Reference
100	29	14	20	60	800	Roller	100CF1H
100	29	14	20	57	800	Ball Journal	100CF2H
125	40	14	20	60	900	Roller	125CF1H
125	40	14	20	57	900	Ball Journal	125CF2H
150	35	14	20	60	1000	Roller	150CF1H
150	35	14	20	57	1000	Ball Journal	150CF2H
200	40	14	20	60	1150	Roller	200CF1H
200	40	14	20	57	1150	Ball Journal	200CF2H

### Taper Tread



### CV Series Heavy Duty Taper Tread

Single Flange cast iron wheel. 30° angle flange. Clear resin shellac painted.

Wheel Dia. (mm) A	Tread Width (mm) B	Flange Groove (mm) E	Bearing Bore Size (mm) D	Hub Length (mm) C	Load Cap. (kg)	Bearing Type	Catalogue Reference
100	35	15	20	60	800	Plain	100CF1A
100	35	15	20	57	800	Ball Journal	100CF2A
125	40	15	20	60	900	Plain	125CF1A
125	40	15	20	57	900	Ball Journal	125CF2A
150	35	15	20	60	1000	Plain	150CF1A
150	35	15	25	60	1000	Plain	150CF1C
150	35	15	20	57	1000	Ball Journal	150CF2A
200	40	15	20	60	1150	Plain	200CF1A
200	40	15	25	60	1150	Plain	200CF1C
200	40	15	20	57	1150	Ball Journal	200CF2A

Where applications include continuous or frequent movement, especially where combined with heavy loads, we recommend the use of the *Ball Journal* bearings.