

## Wheels

### PNBJ, DVR, EAB, PCB and ET Wheels

**PNBJ Series**  
Polyurethane Tyre on  
a Nylon Centre



Wheel Dia. (mm)	Tread Width (mm)	Bore Size (mm)	Hub Length (mm)	Load Cap. (kg)	Bearing Type	Catalogue Reference
125	40	15	45	300	Ball Journal	<a href="#">AW125PNBJ</a>
150	45	20	58	500	Ball Journal	<a href="#">AW150PNBJ</a>
200	50	20	58	600	Ball Journal	<a href="#">AW200PNBJ</a>



**DVR Series**  
Black rubber tyre  
with a pressed steel  
centre.

Wheel Dia. (mm)	Tread Width (mm)	Bore Size (mm)	Hub Length (mm)	Load Cap. (kg)	Bearing Type	Catalogue Reference
100	30	12	37.8	70	Roller	<a href="#">DVR1003012</a>
125	37	12	44.4	100	Roller	<a href="#">DVR1253712</a>
160	40	20	58	150	Roller	<a href="#">AW160RMB</a>
200	50	20	58	205	Roller	<a href="#">AW200RMB</a>

**EAB Series**  
Black elastic rubber  
tyre with an  
aluminium centre.



Wheel Dia. (mm)	Tread Width (mm)	Bore Size (mm)	Hub Length (mm)	Load Cap. (kg)	Bearing Type	Catalogue Reference
100	40	15	40	160	Ball Journal	<a href="#">AW100EAB</a>
125	50	20	60	225	Ball Journal	<a href="#">AW125EAB5020</a>
160	50	20	60	300	Ball Journal	<a href="#">AW160EAB</a>
200	50	20	60	400	Ball Journal	<a href="#">AW200EAB</a>



**PCB Series**  
Cast grade Polyurethane  
tyre with cast iron  
centre.  
Other sizes and  
capacities are available  
- call Sales with your  
requirements.

Wheel Dia. (mm)	Tread Width (mm)	Bore Size (mm)	Hub Length (mm)	Load Cap. (kg)	Bearing Type	Catalogue Reference
100	40	20	40	300	Ball Journal	<a href="#">AW100PCB</a>
125	40	20	40	400	Ball Journal	<a href="#">AW125PCB</a>
150	50	20	60	800	Ball Journal	<a href="#">AW150PCB</a>
200	50	20	60	1100	Ball Journal	<a href="#">AW200PCB</a>
250	60	25	60	1400	Ball Journal	<a href="#">AW250PCB</a>

**ET Series: Econothane**  
Polyurethane tyre on  
Aluminium Wheel



Wheel Dia. (mm)	Tread Width (mm)	Bore Size (mm)	Hub Length (mm)	Load Cap. (kg)	Bearing Type	Catalogue Reference
100	50	20	60	300	Ball Journal	<a href="#">100ET5060</a>
125	50	20	60	450	Ball Journal	<a href="#">125ET5060</a>
150	50	20	60	550	Ball Journal	<a href="#">150ET5060</a>
200	50	20	60	800	Ball Journal	<a href="#">200ET5060</a>
250	50	20	60	1000	Ball Journal	<a href="#">250ET5060</a>

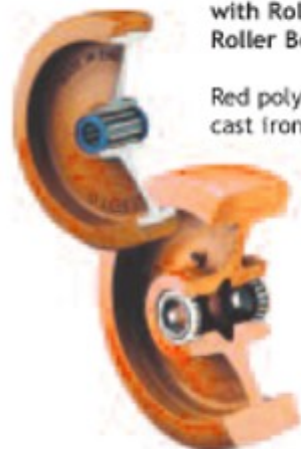
## WSU Series

Flexello superthane polyurethane wheels combine the load capacity and wear resistance of cast iron with all the advantages of a soft resilient tread. High load capacity is coupled with a comparatively low tractive resistance.

The tear strength is two to five times greater than that of natural rubber and the high abrasion resistance ensures a useable life 10 times that of rubber.

### WSU Series Heavy Duty wheels with Roller and Taper Roller Bearings

Red polyurethane tyre, red cast iron centre.



\* These wheels are fitted with taper roller bearings for use in KV, KVF (and possibly GT and GTF) castors and have axle tubes to reduce the bore from the 3/4ø of the inner component of the taper roller bearing to the 12mm diameter of the high tensile axle bolt used on all KV and KVF series castors.

The axle tubes are threaded at each end and fitted with thin adjusting nuts, which are screwed up finger tight during manufacture. When fitting these wheels into castors it is vitally important that the adjusting nuts are "backed off" slightly to the point when, with the 12mm HT bolt fully tightened, the wheel has just perceptible sideways 'play'. Until the knack of correct adjustment is acquired it may take several steps to achieve the correct amount of 'play'.

NB. Wheels with a suffix TM which are not identified with an \* are for use in EH and DHF series castors. They are supplied with taper roller bearing cups ready fitted, and with the cones, seals and washers loose. It is vitally important to provide means of fine bearing adjustment to give just perceptible sideways 'play'. 'Preload' or excessive clearance will inevitably result in bearing failure.

As these wheels are designed for use on axles supported in castor forks both ends, they will not be able to carry their full rated weights if they are mounted on cantilever axles.

Wheel Dia. (mm)	Tread Width (mm)	Bore Size (mm)	Hub Length (mm)	Load Cap. (kg)	Bearing Type	Catalogue Reference	USED IN CASTOR SERIES
75	29	12	39	150	Plain	WSU3M12	61
100	43	15	48	295	Roller	WSU4RBW15	SL, 61, 22
125	35	15	48	325	Roller	WSU5RBW15	SL, 61, 22
125	35	25	50	325	Roller	WSU5RBW25	-
125	35	25.4	50	325	Roller	WSU5LRB	-
150	38	20	60	600	Roller	WSU61RBW20	SL, 61, 22
150	45	20	60	725	Roller	WSU6RBW20	KV, GT, JA, 55
150	45	12.7	62	725	Taper Roller	WSU6TM*	KV, GT, JA
150	45	25	60	725	Roller	WSU6RBW25	-
150	45	25.4	60	725	Roller	WSU6LRB	-
200	51	20	60	1045	Roller	WSU8RBW20	KV, GT, SL, JA, 55
200	51	12.7	62	1045	Taper Roller	WSU8TM*	KV, GT, JA
200	51	25	60	1045	Roller	WSU8RBW25	-
200	51	25.4	60	1045	Roller	WSU8LRB	-
200	76	12.7	106	1270	Taper Roller	WSU83TM*	KV
200	76	19.1	92	1270	Taper Roller	WSU108TM	EH
250	51	12.7	62	1135	Taper Roller	WSU107M*	KV, GT
250	51	25	60	1135	Roller	WSU10RBW25	KV, GT
250	51	25.4	60	1135	Roller	WSU10RB	-
250	51	31.8	60	1135	Roller	WSU10LRB	-
250	76	12.7	106	2270	Taper Roller	WSU103TM*	KV
250	76	19.1	92	2270	Taper Roller	WSU110TM	EH
250	76	31.8	92	2950	Taper Roller	WSU210TM	EH
250	76	38.1	95	2950	Roller	WSU210RB	-
300	57	12.7	62	1270	Taper Roller	WSU127M*	KV
300	57	25	60	1270	Roller	WSU12RBW25	KV
300	57	25.4	60	1270	Roller	WSU12RB	-
300	57	31.8	60	1270	Roller	WSU12LRB	-
300	76	31.8	92	2950	Taper Roller	WSU212TM	EH
300	76	38.1	95	2950	Roller	WSU212RB	-
300	102	31.8	118	4080	Taper Roller	WSU312TM	EH
400	127	34.9	143	6120	Taper Roller	WSU516TM	EH

Conversion mm/ins : 12.7 = 1/2, 19.1 = 3/4, 25.4 = 1, 31.8 = 1 1/4, 38.1 = 1 1/2, 34.9 = 1 3/8.

### WSU Series Heavy Duty wheels with Ball Journal Bearings

Red polyurethane tyre, red cast iron centre.



Wheel Dia. (mm)	Tread Width (mm)	Bore Size (mm)	Hub Length (mm)	Load Cap. (kg)	Bearing Type	Catalogue Reference	USED IN CASTOR SERIES
150	45	12	61	725	Ball Journal	WSU6BJM12	SL, GT, KV
150	45	20	57	725	Ball Journal	WSU6BJM20	-
150	45	25	57	725	Ball Journal	WSU6BJM25	-
200	51	12	61	1045	Ball Journal	WSU8BJM12	SL, GT, KV
200	51	20	57	1045	Ball Journal	WSU8BJM20	-
200	51	25	57	1045	Ball Journal	WSU8BJM25	-
200	76	25	92	1270	Ball Journal	WSU83BJM25	-
250	51	12	61	1135	Ball Journal	WSU10BJM12	GT, KV
250	51	25	57	1135	Ball Journal	WSU10BJM25	-
300	57	12	61	1270	Ball Journal	WSU12BJM12	KV
300	57	25	57	1270	Ball Journal	WSU12BJM25	-

## PT Series Wheels

A range of Polyurethane and Vulkollan urethane elastomer tyred wheels. These tyres have a high tear strength, exceptional abrasion resistance and are have a useful life of up to ten times that of equivalent rubber tyred wheels under similar conditions and load.



Load capacities are up to three times that of similar rubber tyred wheels, which means that smaller diameter wheels can be used if required. Vulkollan tyred wheels also offer excellent recovery from long periods of heavy static loading combined with low rolling resistance and floor saving.

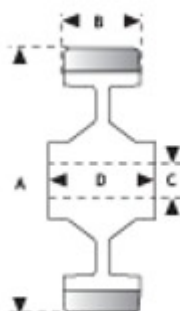
Resistant to a wide range of oils, greases and chemicals, Vulkollan Polyurethane is used on 150mm sized wheels and above and performs satisfactorily between -30°C and +80°C under normal conditions.

Polyurethanes are sensitive to hydrolysing agents such as hot water, steam and hot moist air, strong acids and alcohols. A special grade with high hydrolysis resistance and no loss of load handling performance is available to special order. To order replace the letters PT with WC in the catalogue reference when ordering.

When fitting these wheels into brackets of the castor ranges indicated above, the load capacity of the complete castor must be downrated to the maximum rating shown in either the castor range assembly table, or that of the wheel, whichever is lower.

### Headed Spacers

To fit ball journal wheels into castors use a pair of headed spacer bushes. These sleeve the bore and increase the hub width to match the castor frame and axle bolt. Details on request.

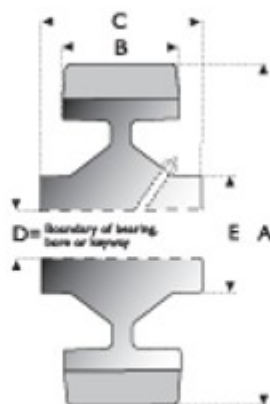


Wheel Dia. (mm) A	Tread Width (mm) B	Bearing Bore Size (mm) C	Hub Length (mm) D	Load Cap. (kg)	Bearing Type	Catalogue Reference	USED IN CASTOR SERIES
50	14	12	17	80	Plain	050PT0L	L
50	19	8	24	80	Plain	050PT02	2
63	25	10	30	135	Plain	063PT03	3
63	25	9.5	31	135	Roller	063PTR3	3
75	19	10	24	90	Plain	075PT02	2
75	25	10	30	200	Plain	075PT03	3
75	25	12	45	175	Plain	075PT04	4
75	25	12	45	175	Roller	075PT14	4
75	25	15	45	175	Ball Journal	075PT24	4
100	19	10	24	150	Plain	100PT02	2
100	19	10	30	150	Plain	100PT03	3
100	29	12	45	250	Plain	100PT04	4
100	29	12	45	250	Roller	100PT14	4
100	38	20	60	340	Roller	100PT1H	G, H
100	38	20	57	340	Ball Journal	100PT2H	G, H
125	32	12	45	350	Plain	125PT04	4
125	32	12	45	350	Roller	125PT14	4
125	38	20	60	425	Roller	125PT1H	G, H
125	38	20	57	425	Ball Journal	125PT2H	G, H
150	38	20	60	730	Plain	150PT05	5, G, H
150	38	20	60	730	Roller	150PT15	5, G, H, P
150	38	20	57	730	Ball Journal	150PT2H	5, G, H, O
150	38	25	60	730	Roller	150PT1A	-
175	45	25	60	910	Roller	175PT1A	-
200	45	20	60	1100	Plain	200PT05	5, G, H
200	45	20	60	1100	Roller	200PT15	5, G, H, P
200	45	20	57	1100	Ball Journal	200PT2H	5, G, H, P
200	45	25	60	1100	Plain	200PT0A	-
200	45	25	60	1100	Roller	200PT1A	-
200	45	19	60	1100	Taper Roller	200PTTA	-
200	57	20	57	1300	Ball Journal	200PT2A	G, H, P
200	75	19	89	1800	Taper Roller	200PTTT	T, X
200	75	25.4	89	1800	Taper Roller	200PTTC	T
200	75	25	78	1800	Ball Journal	200PT2P	P
200	75	30	76	1800	Ball Journal	200PT2Q	-
250	45	25	60	1200	Roller	250PT1H	H, P
250	45	25	57	1200	Ball Journal	250PT2H	H, P
250	75	19	89	2500	Taper Roller	250PTTT	T, X
250	75	25.4	89	2500	Taper Roller	250PTTC	T
250	75	25	78	2500	Ball Journal	250PT2P	P
250	75	30	76	2500	Ball Journal	250PT2Q	-
300	45	25	60	1400	Roller	300PT1H	H, P
300	45	25	57	1400	Ball Journal	300PT2H	H, P
300	75	19	89	2750	Taper Roller	300PTTT	T, X
300	75	25.4	89	2750	Taper Roller	300PTTB	T
300	75	25	78	2750	Ball Journal	300PT2P	-
300	75	30	76	2750	Ball Journal	300PT2Q	-
400	100	25.4	114	4500	Taper Roller	400PTTT	T
400	100	35	104	4500	Ball Journal	400PT2A	-
400	125	50	121	6700	Taper Roller	400PT3Z	Y, Z

# Polyurethane Tyred Wheels

## PT Designer Series Wheels

Aimed at offering the Design Engineer an unrivalled choice, this range of high performance cast iron wheels with Vulkollan Polyurethane tyres offer specific boundary dimensions into which can be incorporated bearings, bores or keyways as required. Vulkollan is unsurpassed as a polyurethane elastomer for wheels in conveyor and transportation systems, offering high load bearing capacity, minimal build up of heat and high abrasion resistance.



Wheel Dia. (mm)	Tread Width (mm/ins)	Load Cap. (kg)	Axle Bore (mm/ins)	Dimensions (mm)					Catalogue Reference		
				A	B	C	D	E	Plain Bore	Plain Bore Keywayed	Ball Bearing
75	35	300	12mm	75	35	35	48	55	075 35 PTO 12	075 35 PTU 12	075 35 PT2 12
75	35	300	20mm	75	35	35	48	55	075 35 PTO 20	075 35 PTU 20	075 35 PT2 20
75	35	300	25mm	75	35	35	48	55	075 35 PTO 25	075 35 PTU 25	n/a
75	35	300	30mm	75	35	35	48	55	075 35 PTO 30	075 35 PTU 30	n/a
75	35	300	0.5ins	75	35	35	48	55	075 35 PTP 0.5	075 35 PTV 0.50	075 35 PTJ 0.50
75	35	300	0.75ins	75	35	35	48	55	075 35 PTP 0.75	075 35 PTV 0.75	075 35 PTJ 0.75
75	35	300	1.00ins	75	35	35	48	55	075 35 PTP 1.00	075 35 PTV 1.00	n/a
75	35	300	1.25ins	75	35	35	48	55	075 35 PTP 1.25	075 35 PTV 1.25	n/a
100	40	500	12mm	100	40	45	48	57	100 40 PTO 12	100 40 PTU 12	100 40 PT2 12
100	40	500	20mm	100	40	45	48	57	100 40 PTO 20	100 40 PTU 20	100 40 PT2 20
100	40	500	25mm	100	40	45	48	57	100 40 PTO 25	100 40 PTU 25	100 40 PT2 25
100	40	500	30mm	100	40	45	48	57	100 40 PTO 30	100 40 PTU 30	n/a
100	40	500	35mm	100	40	45	48	57	100 40 PTO 35	100 40 PTU 35	n/a
100	40	500	0.50ins	100	40	45	48	57	100 40 PTP 0.5	100 40 PTV 0.50	100 40 PTJ 0.50
100	40	500	0.75ins	100	40	45	48	57	100 40 PTP 0.75	100 40 PTV 0.75	100 40 PTJ 0.75
100	40	500	1.00ins	100	40	45	48	57	100 40 PTP 1.00	100 40 PTV 1.00	100 40 PTJ 1.00
100	40	500	1.25ins	100	40	45	48	57	100 40 PTP 1.25	100 40 PTV 1.25	n/a
100	40	500	1.50ins	100	40	45	48	57	100 40 PTP 1.50	100 40 PTV 1.50	n/a
125	30	500	20mm	125	30	35	48	55	125 30 PTO 20	125 30 PTU 20	125 30 PT2 20
125	30	500	25mm	125	30	35	48	55	125 30 PTO 25	125 30 PTU 25	125 30 PT2 25
125	30	500	30mm	125	30	35	48	55	125 30 PTO 30	125 30 PTU 30	n/a
125	30	500	35mm	125	30	35	48	55	125 30 PTO 35	125 30 PTU 35	n/a
125	30	500	0.75ins	125	30	35	48	55	125 30 PTP 0.75	125 30 PTV 0.75	125 30 PTJ 0.75
125	30	500	1.00ins	125	30	35	48	55	125 30 PTP 1.00	125 30 PTV 1.00	125 30 PTJ 1.00
125	30	500	1.25ins	125	30	35	48	55	125 30 PTP 1.25	125 30 PTV 1.25	n/a
125	30	500	1.50ins	125	30	35	48	55	125 30 PTP 1.50	125 30 PTV 1.50	n/a
125	45	600	25mm	125	45	50	48	55	125 45 PTO 25	125 45 PTU 25	125 45 PT2 25
125	45	600	30mm	125	45	50	48	55	125 45 PTO 30	125 45 PTU 30	n/a
125	45	600	35mm	125	45	50	48	55	125 45 PTO 35	125 45 PTU 35	n/a
125	45	600	1.00ins	125	45	50	48	55	125 45 PTP 1.00	125 45 PTV 1.00	125 45 PTJ 1.00
125	45	600	1.25ins	125	45	50	48	55	125 45 PTP 1.25	125 45 PTV 1.25	n/a
125	45	600	1.50ins	125	45	50	48	55	125 45 PTP 1.50	125 45 PTV 1.50	n/a
150	35	700	20mm	150	35	40	50	60	150 35 PTO 20	150 35 PTU 20	150 35 PT2 20
150	35	700	25mm	150	35	40	50	60	150 35 PTO 25	150 35 PTU 25	150 35 PT2 25
150	35	700	30mm	150	35	40	50	60	150 35 PTO 30	150 35 PTU 30	n/a
150	35	700	0.75ins	150	35	40	50	60	150 35 PTO 0.75	150 35 PTV 0.75	150 35 PTJ 0.75
150	35	700	1.00ins	150	35	40	50	60	150 35 PTP 1.00	150 35 PTV 1.00	150 35 PTJ 1.00
150	35	700	1.25ins	150	35	40	50	60	150 35 PTP 1.25	150 35 PTV 1.25	n/a

## PT 'Designer' Series Selection Notes

Stated wheel loadings are for operation under ideal conditions, i.e., the wheel operates infrequently on a smooth surface without axial loading. Wheel loadings must be reduced as follows for any of the following conditions:



**Frequent Use** - In use for more than 45 minutes continuous operation, reduce loadings by 25%.

**Driving Applications** - Reduce loadings by 30%. Speeds of 6 - 10 kph - Reduce loadings by 20%. Speeds of 10 - 16kph reduce loadings by 30%. Reductions are cumulative if more than one condition exists.

Wheel Dia. (mm)	Tread Width (mm/ins)	Load Cap. (kg)	Axle Bore (mm/ins)	Dimensions (mm)					Catalogue Reference			
				A	B	C	D	E	Plain Bore	Plain Bore Keywayed	Ball Bearing	Taper Roller Bearing
150	50	900	25mm	150	50	55	52	65	150 50 PTO 25	150 50 PTU 25	150 50 PT2 25	150 50 PT3 25
150	50	900	30mm	150	50	55	52	65	150 50 PTO 30	150 50 PTU 30	n/a	n/a
150	50	900	35mm	150	50	55	52	65	150 50 PTO 35	150 50 PTU 35	n/a	n/a
150	50	900	1.00ins	150	50	55	52	65	150 50 PTP 1.00	150 50 PTV 1.00	150 50 PTJ 1.00	150 50 PTT 1.00
150	50	900	1.25ins	150	50	55	52	65	150 50 PTP 1.25	150 50 PTV 1.25	n/a	n/a
150	50	900	1.50ins	150	50	55	52	65	150 50 PTP 1.50	150 50 PTV 1.50	n/a	n/a
200	40	1000	25mm	200	40	50	70	80	200 40 PTO 25	200 40 PTU 25	200 40 PT2 25	200 40 PT3 25
200	40	1000	30mm	200	40	50	70	80	200 40 PTO 30	200 40 PTU 30	200 40 PT2 30	200 40 PT3 30
200	40	1000	35mm	200	40	50	70	80	200 40 PTO 35	200 40 PTU 35	n/a	n/a
200	40	1000	40mm	200	40	50	70	80	200 40 PTO 40	200 40 PTU 40	n/a	n/a
200	40	1000	1.00ins	200	40	50	70	80	200 40 PTP 1.00	200 40 PTV 1.00	200 40 PTJ 1.00	200 40 PTT 1.00
200	40	1000	1.25ins	200	40	50	70	80	200 40 PTP 1.25	200 40 PTV 1.25	200 40 PTJ 1.25	200 40 PTT 1.25
200	40	1000	1.50ins	200	40	50	70	80	200 40 PTP 1.50	200 40 PTV 1.50	n/a	n/a
200	60	1300	30mm	200	60	70	70	80	200 60 PTO 30	200 60 PTU 30	200 60 PT2 30	200 60 PT3 30
200	60	1300	35mm	200	60	70	70	80	200 60 PTO 35	200 60 PTU 35	n/a	n/a
200	60	1300	40mm	200	60	70	70	80	200 60 PTO 40	200 60 PTU 40	n/a	n/a
200	60	1300	1.25ins	200	60	70	70	80	200 60 PTP 1.25	200 60 PTV 1.25	200 60 PTJ 1.25	200 60 PTT 1.25
200	60	1300	1.50ins	200	60	70	70	80	200 60 PTP 1.50	200 60 PTV 1.50	n/a	200 60 PTT 1.50
250	45	1200	30mm	250	45	55	80	100	250 45 PTO 30	250 45 PTU 30	250 45 PT2 30	250 45 PT3 30
250	45	1200	35mm	250	45	55	80	100	250 45 PTO 35	250 45 PTU 35	n/a	250 45 PT3 35
250	45	1200	40mm	250	45	55	80	100	250 45 PTO 40	250 45 PTU 40	n/a	n/a
250	45	1200	1.25ins	250	45	55	80	100	250 45 PTP 1.25	250 45 PTV 1.25	250 45 PT2 1.25	250 45 PTT 1.25
250	45	1200	1.50ins	250	45	55	80	100	250 45 PTP 1.50	250 45 PTV 1.50	n/a	250 45 PTT 1.50
250	70	2000	30mm	250	70	80	80	100	250 70 PTO 30	250 70 PTU 30	250 70 PT2 30	250 70 PT3 30
250	70	2000	35mm	250	70	80	80	100	250 70 PTO 35	250 70 PTU 35	250 70 PT2 35	250 70 PT3 35
250	70	2000	40mm	250	70	80	80	100	250 70 PTO 40	250 70 PTU 40	n/a	n/a
250	70	2000	50mm	250	70	80	80	100	250 70 PTO 50	250 70 PTU 50	n/a	n/a
250	70	2000	1.25ins	250	70	80	80	100	250 70 PTP 1.25	250 70 PTV 1.25	250 70 PTJ 1.25	250 70 PTT 1.25
250	70	2000	1.50ins	250	70	80	80	100	250 70 PTP 1.50	250 70 PTV 1.50	250 70 PTJ 1.50	n/a
250	70	2000	2.00ins	250	70	80	80	100	250 70 PTP 2.00	250 70 PTV 2.00	n/a	n/a
300	50	1600	30mm	300	50	60	90	115	300 50 PTO 30	300 50 PTU 30	300 50 PT2 30	300 50 PT3 30
300	50	1600	35mm	300	50	60	90	115	300 50 PTO 35	300 50 PTU 35	300 50 PT2 35	300 50 PT3 35
300	50	1600	40mm	300	50	60	90	115	300 50 PTO 40	300 50 PTU 40	n/a	n/a
300	50	1600	50mm	300	50	60	90	115	300 50 PTO 50	300 50 PTU 50	300 50 PTJ 50	n/a
300	50	1600	1.25ins	300	50	60	90	115	300 50 PTP 1.25	300 50 PTV 1.25	n/a	300 50 PTT 1.25
300	50	1600	1.50ins	300	50	60	90	115	300 50 PTP 1.50	300 50 PTV 1.50	n/a	300 50 PTT 1.50
300	50	1600	2.00ins	300	50	60	90	115	300 50 PTP 2.00	300 50 PTV 2.00	n/a	n/a
300	75	2800	35mm	300	75	85	90	115	300 75 PTO 35	300 75 PTU 35	300 75 PT2 35	300 75 PT3 35
300	75	2800	40mm	300	75	85	90	115	300 75 PTO 40	300 75 PTU 40	300 75 PT2 40	300 75 PT3 40
300	75	2800	50mm	300	75	85	90	115	300 75 PTO 50	300 75 PTU 50	n/a	n/a
300	75	2800	60mm	300	75	85	90	115	300 75 PTO 60	300 75 PTU 60	n/a	n/a
300	75	2800	1.25ins	300	75	85	90	115	300 75 PTP 1.25	300 75 PTV 1.25	300 75 PTJ 1.25	300 75 PTT 1.25
300	75	2800	1.50ins	300	75	85	90	115	300 75 PTP 1.50	300 75 PTV 1.50	300 75 PTJ 1.50	300 75 PTT 1.50
300	75	2800	2.00ins	300	75	85	90	115	300 75 PTP 2.00	300 75 PTV 2.00	n/a	n/a